

# TOYOHARA BIKE WORKS



<http://www.toyohara-bike.com>  
[info@toyohara-bike.com](mailto:info@toyohara-bike.com)

## Policy and Thankfulness

"I met a great bicycle. Please make a wonderful bicycle more!"

We receive from a lot of our customers, such as described above words.

We have been supported by customers who dare to choose our bicycle with tender care.

We have been working on a bicycle with grate thankfulness for customers who understood and chose our bicycle from endless number of bicycle.

Technology, knowledge, a design, and possibility, we have a lot of "Policy" for bicycles more than wards.

But "Piles of the thankfulness for a customer" is the starting point of our craftsmanship, and the greatest "Policy"!



From now on also we will work on bicycle one by one through continuing education to project our passion

## What's the TTF

The result of our company has studied the electric assistant bicycle of all age and makers, Technology, knowledge, experience, etc. are being accumulated abundantly. Based on them we are doing Maintenance, Improvement, Electrification and Restoration of the bicycle every day. TTF (Toyohara tuning factory) serves as a special tuning section which specialized in the electric assistant bicycle.

Our new bicycle are the perfect bicycle of the highest peak after having tuned up maker original within laws and regulations for riding more comfortably and safely and also fashionably. Because of we are doing optimal tuning for the bicycle, such as a motor output system, battery capacity, a drive system, a gear ratio, the diameter of a tire, etc. It is not mere customization that a visitor chooses a part by their taste. As a resulted above, we acquired high technical capabilities and the originality, we are having 【TTF COMPLETE】 approved as original Brando from "Amazon.jp."

The sticker of 【TTF COMPLETE】 is stuck only on the completion vehicles which cleared various maintenance, check, and characteristics to be inspected.



We could say "TTF specification =TTF COMPLETE" is a proof of [TTF QUALITY ]!

## Electrification



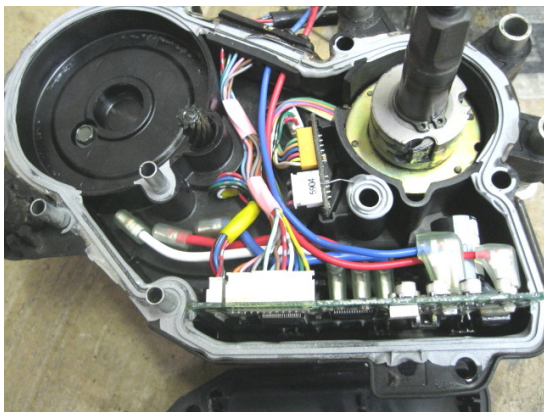
ZIGO LEADER  
made in USA



e-ZIGO LEADER 【TTF COMPLETE】

Electric-powered in line with the laws of Japan is very difficult. However we have the technology along the laws and regulations only in Japan.

## Repair & Overhaul of motor unit



Almost all of bicycle shop in Japan ordinary repaired the motor unit by sending to the makers, but we can repair it of Japan all manufacturers on ourselves. Several makers appreciate our technical capabilities, they served a special maintenance manual to us.

**HONDA**  
RACCOON  
**COMPO**  
1998.3 Released



Above photo is repairing the motor unit of the electric assisted bicycle put on the market in 1998. The technology is only with our company. Motor unit that does not even fix a maker is brought to us.

## Restoration of old bicycle



We make the restoration of old bicycle in our company. The photo is made in UK "ALEX MOULTON" 40 years ago. Sometime we make in-house the parts that became discontinued already.

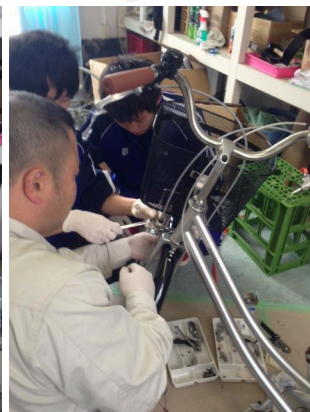


# Development of Special Service Tools



We make n-house that are not commercially available in the necessary tools to establish a bicycle. Number of tools that we have produced ever is over 100.

## Corporate Social Responsibility



These are the photos of my "students" of bicycle club in highschool near our place. It is the project of restoring the bicycles which are abandoned at stations and other areas. "Abandoned bicycles" also are social problem in Japan. In this project, we are trying to give the joy of "making things" "restoring things" and have passion to bicycles which are not "use-n-throw away" thing, to the children who are only playing computer games at home.



We are exchanging for not puncture the tires of the wheelchair. We thought because the low air pressure and punk when it comes to the biggest problem for people who use a wheelchair.